

**NASPA**

REGION III

Summer Symposium

JUNE 8-11, 2014



# WELCOME



Welcome to NASPA Region III's Summer Symposium 2014 at *Disney's Contemporary Resort!*

We hope that this year's conference allows you to connect with friends and colleagues from around the region while engaging in in-depth discussions about issues and opportunities about higher education. We have incorporated a number of dynamic speakers, panels and programs which will offer you the opportunity to learn and grow while enjoying a beautiful resort and experience in Lake Buena Vista, FL.

While enjoying your stay, we invite you to join us at our Opening Session and Reception celebrating our Region which is sponsored by Chartwells and celebrate the magic of the Disney experience with a dessert reception and fireworks at Epcot on Monday evening sponsored by Aramark.

Thank you to our wonderful conference planning committee for all of their hard work and dedication in creating a wonderful line up of activities for NASPA Region III Summer Symposium!



PEGGY CROWE & VICKI DOBIYANSKI

# SPONSORS

## PRESENTING LEVEL SPONSORS



ARAMARK Higher Education is an organization dedicated to service excellence in dining, facilities and conference center management. We create living and learning environments that foster healthy growth, build loyalty and create lasting connections to more than 600 campuses across North America.

By deeply understanding and aligning with our clients' goals, we seek to responsibly address the issues that are most concerning to universities and colleges today. We focus on helping campuses thrive by treating employees well, caring for the earth and its environment, and ensuring the health and well-being of the campus and the communities in which we live, learn and work.



Chartwells Higher Education Dining Services is a division of Compass Group and provides dining services for over 230 colleges and universities nationwide. We are the recognized leader in foodservice management, hospitality and award winning YouFirst guest service within college and university dining environments throughout academic institutions across the United States. We take tremendous pride in our high standards and dedicated service culture while providing nutritious cuisine that satisfies unique appetites, lifestyles and dietary needs for every guest dining on campus.

Chartwells is committed to practices that honor ethical values, embrace diversity and inclusion, support the environment and value communities through demonstrated leadership, professionalism and new innovations.

For more information about Chartwells, visit our websites at [www.EatLearnLive.com](http://www.EatLearnLive.com) and [ChartwellMagazine.com](http://ChartwellMagazine.com) as well as our social media pages at [Facebook.com/ChartwellsHigherEd](https://Facebook.com/ChartwellsHigherEd), [Twitter.com/ChartwellsHE](https://Twitter.com/ChartwellsHE) and [YouTube.com/ChartwellsHigherEd](https://YouTube.com/ChartwellsHigherEd)

## SILVER LEVEL SPONSORS



A shared course for success



Campus Labs is a web-based platform that connects data (and people) from across the institution for the purposes of improving Student Success. It is our intention to connect academic and non-academic data thus uncovering new insights into learning, campus engagement, risk patterns, and, ultimately, factors that impact retention.

Among other things, we're helping our campus partners understand non-cognitive factors such as resiliency and campus engagement during the First Year, then building on the data to incorporate ongoing academic performance, co-curricular involvement, advisor input, and other assessment measures in order to reveal the most complete understanding of Student Success.

Campus Labs serves over 650 institutions across the U.S. and abroad. Web link: [campuslabs.com](http://campuslabs.com)



EverFi, Inc. is the leading education technology company focused on teaching, assessing, and certifying students in the critical skills they need for life. EverFi partners with more than 500 higher education institutions to bring its innovative learning platform to students across the country.

EverFi's online platforms provide scalable, effective solutions to help ensure all students are exposed to critical information.

## BRONZE LEVEL SPONSORS

Sodexo supports student engagement and improves the Quality of Life for the entire Schools community. By focusing on Quality of Life services, we reinforce the overall experience of a student's educational journey. From nutritious school meals to clean classrooms to safe playgrounds and more, Sodexo enhances every student's ability to learn and grow. For more information, please visit <http://www.sodexoUSA.com>



As the nation's foremost provider of student conduct administration software, Maxient offers a one-stop, completely customizable, web-based solution that fits your budget. Extensive features, 24/7 support, and our unparalleled blend of technology-savvy staff with hands-on experience in student affairs makes Maxient the ideal choice for all your student conduct needs.



The Experts in Student Conduct Software

Public Identity, Inc. offers a wide spectrum of branded promotional merchandise and custom decorated apparel. We strive to cultivate enduring client relationships by ensuring satisfaction with our comprehensive product selection, valuable creative input, easy and efficient ordering, and expedient product delivery.



With our better-than-price-matching guarantee, and college market wherewithal, we believe we can help give you a marketing edge while simultaneously driving cost savings.

Every day, USA TODAY is the trusted source of news and information for over 3.9 million readers. This daily audience of affluent, well-educated business professionals is a desirable demographic delivering a high value target to advertisers. The USA TODAY readership program is offered to campuses across the nation and provides high-quality, timely information to students for academic and personal use.



Since 2000 Off Campus Partners has been working with universities, property managers, and students to simplify the off-campus housing process. We offer more than just a website, we provide hosted software and support, off-campus housing listings, and educational resources for students. We currently partner with 75 universities across the country. [www.offcampuspartners.com](http://www.offcampuspartners.com)



## CONTRIBUTORS

SOUTHERN  
PLACEMENT  
EXCHANGE

PAPERCLIP  
COMMUNICATIONS

THE UNIVERSITY OF  
MEMPHIS®  
Official Campus Store

RESIDENCE LIFE CINEMA®  
A Division of Swank Motion Pictures Inc., Tim Swank, Chairman



# SCHEDULE AT A GLANCE

## SUNDAY, JUNE 8

8:00am - 4:00pm	NASPA Region III Board Orientation/Meeting GRAND REPUBLIC A
1:00pm - 5:00pm	Check-in/Onsite Registration MAIN LEVEL
<b>1:00pm - 5:00pm</b>	<b>Exhibits Open</b>
5:00pm - 7:00pm	Opening Session - <i>Dr. Patricia A. Whitely</i> GRAND REPUBLIC B
7:00pm - 9:00pm	Opening Reception <i>Sponsored by Chartwells</i> NUTCRACKER 2 & 3

## MONDAY, JUNE 9

7:30am - 8:30am	Continental Breakfast
7:30am - 12:00pm	Check-in/Onsite Registration
<b>7:30am - 4:00pm</b>	<b>Exhibits Open</b>
7:45am - 9:00am	Vice President Networking Meeting
8:00am - 9:00am	Educational Sessions A
<b>9:00am - 9:15am</b>	<b>Break - Visit Exhibits</b>
9:15am - 10:15am	Educational Sessions B
<b>10:15am - 10:30am</b>	<b>Break - Visit Exhibits</b>
10:30am - 12:00pm	<b>Enrollment Management Panel -</b> <i>Dr. Carl Cunningham, Jr.</i> <i>Dr. Don Hossler</i> <i>Dr. Dennis Pruitt</i> <i>Dr. Teresa Thompson</i> GRAND REPUBLIC A
12:00pm - 1:15pm	Awards Luncheon GRAND REPUBLIC B
<b>1:15pm - 1:30pm</b>	<b>Break - Visit Exhibits</b>
1:30pm - 2:30pm	Educational Sessions C
<b>2:30pm - 2:45pm</b>	<b>Break - Visit Exhibits</b>
2:45pm - 3:45pm	Featured Speaker - <i>Peter Lake</i> GRAND REPUBLIC B
7:00pm - 9:30pm	Dessert Party @ Epcot* <i>Sponsored by Aramark</i>

## TUESDAY, JUNE 10

8:30am - 9:30am	Continental Breakfast
8:30am - 12:00pm	Check-in/Onsite Registration
<b>8:30am - 4:00pm</b>	<b>Exhibits Open</b>
9:00am - 10:15am	AVP/DOS Networking Meeting
9:15am - 10:15am	Educational Sessions D
<b>10:15am - 10:30am</b>	<b>Break - Visit Exhibits</b>
10:30am - 12:00pm	Featured Speaker - <i>Dr. Maggie Culp</i> GRAND REPUBLIC B
12:00pm - 1:30pm	Lunch on Your Own
1:30pm - 2:30pm	Educational Sessions E
<b>2:30pm - 2:45pm</b>	<b>Break - Visit Exhibits</b>
2:45pm - 3:45pm	Educational Sessions F

## WEDNESDAY, JUNE 11

8:30am - 10:30am	Closing Brunch - <i>Dr. Becky Spurlock</i> GRAND REPUBLIC B
------------------	---

All conference activities are held in  
*Disney's Contemporary Resort.*

## EPCOT DESSERT SOCIAL

\* **Directions for Dessert and Fireworks Social at Epcot:**  
Meet on the 4th floor of the *Disney's Contemporary Resort* at 7:00pm to travel to Epcot by Monorail as a group.  
If you plan to be at Epcot with your own park pass on Monday, June 9, please visit the **NASPA Region III Summer Symposium Registration Desk** for instructions on attending the Dessert and Fireworks Social.

All attendees must wear their conference badges.

# SPEAKERS

## DR. PATRICIA A. WHITELY



**SUNDAY, JUNE 8 | 5:00PM - 7:00PM | GRAND REPUBLIC B**

Dr. Patricia A. Whitely has been the Vice President for Student Affairs at the University of Miami since 1997, and she also serves as an Adjunct Faculty Member in the Higher Education Administration program. Dr. Whitely has been involved with NASPA through the Foundation Board, Editorial Board, as a presenter for NASPA's Alice Manicur Symposium, and the NASPA Region III Committee. On March 18, 2014, Dr. Whitely transitioned into the role of Chair for NASPA's Board of Directors. NASPA Region III awarded her the John Jones Award for Outstanding Performance as a Senior Student Affairs Professional in June 2012. She is also the recipient of the 2013 NASPA Scott Goodnight Award for Outstanding Performance as a Senior Student Affairs Officer and the 2009 recipient of NASPA's Pillar of the Profession Award. Dr. Whitely received her bachelor's degree from St. John's University, master's degree from the University of South Carolina, and her doctorate in higher education from the University of Miami.

## PETER F. LAKE



**MONDAY, JUNE 9 | 2:45PM - 3:45PM | GRAND REPUBLIC B**

Peter F. Lake is professor of law, Charles A. Dana chair and director of the Center for Excellence in Higher Education Law and Policy at Stetson University College of Law. He is an internationally-recognized expert on higher education law and policy. Professor Lake has been quoted or referred to in many publications, and has appeared on several major media networks, such as NPR, ABC and CNN. He has authored numerous law review articles and other publications, including three books. Over the years, Professor Lake has served on boards for several groups, most recently on the roundtable for the development of Student Mental Health and the Law: A Resource for Institutions of Higher Education, published by the JED Foundation. Professor Lake also serves as the chair of the Stetson University College of Law's Annual Conference on Law and Higher Education, which is held in Orlando, Florida, each February. Professor Lake is a graduate of Harvard College and Harvard Law School.

## DR. MAGGIE CULP



**TUESDAY, JUNE 10 | 10:30AM - 12:00PM | GRAND REPUBLIC B**

Dr. Maggie Culp is a nationally recognized leader in student affairs, student success, and institutional effectiveness, and served as a former senior student affairs officer and faculty member in Florida, Virginia and Texas. She has held a variety of elected positions in state and national associations, served on multiple Southern Association Reaffirmation teams, and received numerous state and national awards, including NASPA, ACPA, and AACC's Pyramid Award, ACPA's Diamond Honoree Award, and the Outstanding Institutional Advising Program Award (twice from NACADA). Dr. Culp has authored numerous book chapters and journal articles including "Don't Fence Me In: the Senior Student Affairs Officer in the 21st Century" (2011). As a consultant, Dr. Culp has assisted more than 50 colleges, universities, and higher education systems from New York to Alaska to reengineer student services, build cultures of evidence, design learning-centered programs and services, and strengthen partnerships between academic and student affairs. Currently, she is partnering with NASPA to implement the Lumina-funded Degree Now initiative in West Virginia.

# ENROLLMENT MANAGEMENT PANEL

## DR. CARL CUNNINGHAM, JR.



In August 2013, Carl Cunningham Jr., Ph.D., joined Alcorn State University as the Vice President for Student Success and Enrollment Management. Prior to his service at Alcorn State, Dr. Cunningham served as the director of the Office of Multicultural Student Affairs at the University of South Alabama where he established their strategic enrollment management model. During his tenure at the University of South Alabama, the university experienced record growth while reaching new student populations and monitoring those students' academic success. Cunningham earned both his master's degree in geography and his doctorate degree in higher education administration from the University of Southern Mississippi.

## DR. DON HOSSLER



Dr. Don Hossler is the Director of the Center for Postsecondary Research and Professor of Educational Leadership & Policy Studies at Indiana University. His areas of specialization include: college choice, student financial aid policy, enrollment management, and higher education finance. Hossler completed his bachelor's degree at California Lutheran University, and holds a Ph.D. in Higher Education from Claremont Graduate University. Hossler is the author, or co-author, of 12 books and monographs and more than 65 articles and book chapters. He has also received national awards for research and scholarship from both ACPA and NASPA.

## DR. DENNIS PRUITT



Dr. Dennis Pruitt, Vice President for Student Affairs, Vice Provost and Dean of Students at the University of South Carolina, has led the University's Division of Student Affairs and Academic Support since 1983. He designed the University's award-winning enrollment management model, developed what is widely regarded as one of the earliest and most thorough strategic-planning processes in the field. Dr. Pruitt has been honored with several awards during his career including NASPA's Scott Goodnight Award for Outstanding Service and NASPA's Outstanding Pillars of the Profession Award. Pruitt earned his bachelor's from Armstrong Atlantic State University, masters from West Georgia College, and doctorate from South Carolina.

## DR. TERESA THOMPSON



Dr. Teresa Thompson is the Vice President for Student Affairs and Enrollment Management, at Georgia Southern University. Her leadership efforts have resulted in a 6,400+ student increase and an increase in SAT scores which has moved the University to the top 20% in the state for entering freshmen SAT scores. Thompson leads the Division of Student Affairs and Enrollment Management as they deliver innovative programs and services which are responsive to the needs of students and foster community-building and student success. Dr. Thompson's driving force for her work is always asking the question, "What can we do to support our students to help them be successful?"

## ENROLLMENT MANAGEMENT PANEL

Monday, June 9  
10:30 am - 12:00 pm  
Grand Republic A



# CLOSING SPEAKER

## DR. BECKY SPURLOCK



WEDNESDAY, JUNE 11 | 8:30 AM - 10:30 AM | GRAND REPUBLIC B

Dr. Becky Spurlock serves as the NASPA Region III Director as well as the Associate Dean of Students at Sewanee: The University of the South. An educator, sought after speaker and leader in the field of Student Affairs, Dr. Spurlock regularly speaks and consults on developing community, gender differences, leadership, and assessment. She has nearly 20 years of experience in Student Affairs — her portfolio has included residence life, academic advising, career counseling, Greek life, student activities and student unions, the first-year experience, conduct, and Title IX. A high energy speaker, Dr. Spurlock is known for her ability to engage audiences, address difficult topics, and connect through humor. Trained in narrative analysis and as a qualitative researcher, Dr. Spurlock uses stories to connect, teach, and create relationships. Dr. Spurlock has a Ph.D. in Higher Education Administration from Texas A&M University as well as two degrees from Texas State University, a B.S. in Recreational Administration and an M.Ed. in Counseling and Guidance.

**Your gift  
to the  
NASPA  
Foundation  
makes a  
difference**

Through a tax-deductible contribution to the NASPA Foundation, you will:

- **INVEST** in innovative research
- **GIVE** back to the profession you love
- **REWARD** young student affairs professionals with scholarships
- **CELEBRATE** the work of outstanding colleagues
- **VALIDATE** student affairs as a significant force on campus
- **CONTRIBUTE** to best practices in our field
- **PRESERVE** the history of our profession

Together, we can do more for you, your colleagues and those you teach and mentor! The NASPA Foundation is a philanthropic organization – our impact depends on you. More donors making more gifts directly translates into more research and scholarship funding for the profession.

Make your gift to the NASPA Foundation today at  
[www.naspa.org/foundation](http://www.naspa.org/foundation)



# PROGRAMS

## COMPETENCIES LIST AND ICONS



Advising and Helping



Assessment, Evaluation and Research



Equity, Diversity and Inclusion



Ethical Professional Practice



History, Philosophy and Values



Human and Organizational Resources



Law, Policy and Governance



Leadership



Personal Foundations



Student Learning and Development

## SUNDAY, JUNE 8

**NASPA Region III Board Orientation/Meeting** **Grand Republic A** **8:00 am - 4:00 pm**

**Check-in/Onsite Registration** **American Level Registration Counter** **1:00 pm - 5:00 pm**

**Exhibits Open** **Grand Republic Lobby** **1:00 pm - 5:00 pm**

**Opening Session** **Grand Republic B** **5:00 pm - 7:00 pm**

**Keynote Speaker: Dr. Patricia A. Whitely — Student Affairs: Future Challenges and Opportunities**

The current Chair of the NASPA Board of Directors will update Region III on future challenges and opportunities facing the field of student affairs in 2014 and beyond. The session will also address how NASPA is positioned to drive engagement and support professional development.

**Opening Reception** **Nutcracker 2, 3 and Courtyard** **7:00 pm - 9:00 pm**

## MONDAY, JUNE 9

**Continental Breakfast** **Grand Republic Lobby** **7:30 am - 8:30 am**

**Check-in/Onsite Registration** **American Level Registration Counter** **7:30 am - 12:00 pm**

**Exhibits Open** **Grand Republic Lobby** **7:30 am - 4:00 pm**

**Vice President Networking Meeting** **Grand Republic D** **7:45 am - 9:00 am**

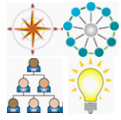
**Session A1** **Grand Republic A** **8:00 am - 9:00 am**



**AGORA: Focusing on a Paradigm Shift in Campus Civility**

Corey King, Associate Vice President and Dean of Students, Florida Atlantic University

Campus civility is an emerging topic in higher education. However, this topic often brings into question the idea that free speech, academic freedom, and civil discourse will be “tainted” by engaging in campus civility initiatives. Come and dialogue, in a case study, with an institution that gained national attention in the wake of an academic exercise and naming opportunity that resulted in lessons learned and new discoveries.

**Session A2****Grand Republic B****8:00 am - 9:00 am****Merging Student Development Theory with Campus Business Models**

Daniel Armitage, Assistant Vice President and Dean of Students, University of Memphis

Rosie Phillips-Bingham, Vice President for Student Affairs, University of Memphis

Tom Dorer, Vice President, Aramark Higher Education

Peter Groenendyk, Director of Residence Life and Dining Services, University of Memphis

With the opportunity to manage large auxiliary operations, the University of Memphis Student Affairs team developed interesting partnerships with several vendors to create opportunities to enhance student learning through engagement. The outcomes of these partnerships included high student satisfaction, 97% engagement from commuters and a close to 300% increase in revenues. This program will walk through the stages of developing great business plans for auxiliaries through student development theory, while enhancing student engagement through multiple organizations.

**Session A3****Grand Republic C****8:00 am - 9:00 am****The Professional Training Institute (PTI): An Innovative Approach to Developing New Professionals**

Marc Ebelhar, Assistant Director for Residence Life, Georgia State University

Mylon Kirksy, Associate Director of University Housing, Georgia State University

We created the Professional Training Institute (PTI) to develop the competencies and skills of new professionals. The program integrates student affairs research, U.S. Marine Corps 11 Leadership Principles and 14 Traits, and NASPA/ACPA Professional Competency Areas for Student Affairs Practitioners. The PTI's goals and learning outcomes are designed to prepare staff members for a future career in student affairs.

**Break — Exhibits Open****Grand Republic Lobby****9:00 am - 9:15 am****Session B1****Grand Republic A****9:15 am - 10:15 am****S'MORES: Sophomore Programming**

Ira Lawson, Student Leadership Coordinator, Rhodes College

Sarah Ray, Assistant Director, Residence Life, Rhodes College

Shannon Hoffman, Community Service Coordinator, Rhodes College

Beverly Pfuger, Assistant Director of Career Services, Rhodes College

It is known that sophomores go through what is known as the "Sophomore Slump" where they are working to find their way after that first year of college. Our sophomore programming committee (S'MORES) has developed a structure that utilizes four different offices and a faculty member to address some of the barriers faced by sophomore students. By utilizing leadership theories, community and career services best practices, and developmental models, our committee addresses ways to increase inclusion and provide support for sophomore students, while connecting them to academic affairs and the Memphis, TN community.

**Session B2****Grand Republic C****9:15 am - 10:15 am****Higher Education Case Management: Coordinating Continuity of Care for Students in Distress**

Michael Mardis, Associate Vice President for Student Affairs and Dean of Students, University of Louisville

Angela Newland, Case Manager, University of Central Florida

Andrew Marsch III, Assistant Vice President for Student Life, University of Alabama - Birmingham

JJ Larson, Program Director, Students of Concern Assistance Team, University of South Florida

An expectation to respond to students of concern has led to the hiring of designated case managers at some universities to help with the influx of these situations. Join colleagues in a discussion about how they have responded to concerns utilizing a case management system. There are differences in how each institution addresses the needs of its respective university community.

**Session B3****Grand Republic D****9:15 am - 10:15 am****Tempted by the Poisonous Apple: Implementing Technology in Staff Trainings**

Sarah Friswold, Assistant Director for Residence Life, University of North Florida

The use of technology can be a double-edged sword. It can offer new and engaging ways to help staff learn and process information, but at the same time serve as a distraction. This presentation will discuss strategies to consider when incorporating technology into staff trainings, highlight tools currently available to utilize, and give participants the opportunity to share how they have incorporated technology into trainings.

**Enrollment Management Panel****Grand Republic A****10:30 am - 12:00 pm***Facilitator:* Dr. Ellen Neufeldt, Vice President for Student Engagement & Enrollment Services, Old Dominion University*Panelists:*

Dr. Carl Cunningham, Jr., Vice President for Student Success and Enrollment Management, Alcorn State University

Dr. Don Hossler, Director for the Center of Postsecondary Research &amp; Professor of Educational Leadership and Policy Studies, Indiana University

Dr. Dennis Pruitt, Vice Provost, Vice President for Student Affairs, and Dean of Students, University of South Carolina

Dr. Teresa Thompson, Vice President for Student Affairs and Enrollment Management, Georgia Southern University

Enrollment Management can be described as a systematic or strategic approach to recruit, retain, and graduate students. The number of universities and colleges that have developed specialized efforts and even departments and positions specifically related to enrollment management has increased greatly in recent years. The panel of Enrollment Management experts will share concepts such as increasing application pools; improving yield and conversation rates; increasing diversity; and the important role of retaining students through student involvement, intentional engagement and academic support. The panelists will share how these efforts intersect or shape the work of Student Affairs professionals.

**Awards Luncheon****Grand Republic B****12:00 pm - 1:15 pm****Break - Visit Exhibits****Grand Republic Lobby****1:15 pm - 1:30 pm****Session C1****Grand Republic A****1:30 pm - 2:30 pm****Policy Relevant Research on Students: A Look Inside the Center for Postsecondary Research at Indiana University**

Dr. Don Hossler, Director of the Center for Postsecondary Research &amp; Professor of Educational Leadership and Policy Studies, Indiana University - Bloomington

This session will focus on current and recent research taking place at the Center for Postsecondary Research at Indiana University– Bloomington with an emphasis on the National Survey of Student Engagement, the Beginning College Survey of Student Engagement and the Project on Academic Success which focuses on issues of postsecondary access and success.

**Session C2****Grand Republic C****1:30 pm - 2:30 pm****New Student Affairs Professionals and Their Self-Perceived Competency for the Work**

Jennifer Schneider, Career Development Services Coordinator, Polk State College

This program describes a study that explored the self-perceived competence of new student affairs professionals using the NASPA/ACPA determination of competencies. The program will present the participants' descriptions of the sources of their competence in the ten competency areas. Sources of competence may include opportunities provided by professional associations, on-the-job training and experiences, and the respondents' graduate preparation programs.

**Session C3****Grand Republic D****1:30 pm - 2:30 pm****From Enabling to Life Coaching: Supporting Parents by Promoting Student Responsibility**

Robert Rogers, Dean of Student Services, Beacon College

Parents and students arrive on campus often without discussing their expectations of each other or the college during this relationship transition. Once discussed and agreed upon, conflict can be avoided and appropriate relationships can develop. This presentation will focus on how to facilitate this conversation with parents who are predisposed to enabling their children and how to promote student responsibility.

**Break - Visit Exhibits****Republic Lobby****2:30 pm - 2:45 pm****Featured Speaker: Dr. Peter Lake****Grand Republic B****2:45 pm - 3:45 pm****A Discussion of Legal and Compliance Trends in Higher Education**

Today's legal and compliance trends center around three themes: technology, cost/affordability, and student safety (including Title IX). What are the potential impacts of these developments and how can college staff become better prepared? Will these new legal and regulatory burdens significantly impact academic freedom and autonomy, and usher in a new era of "Compliance U?"

**Dinner on your own with NASPA friends****Dessert Party****Epcot - Italy Isola and West Plaza****7:00 pm - 9:30 pm**

\*See Page 6 for Details.



## TUESDAY, JUNE 10

<b>Continental Breakfast</b>	<b>Grand Republic Lobby</b>	<b>8:30 am - 9:30 am</b>
<b>Check-in/Onsite Registration</b>	<b>American Level Registration Counter</b>	<b>8:30 am - 12:00 pm</b>
<b>Exhibits Open</b>	<b>Grand Republic Lobby</b>	<b>8:30 am - 4:00 pm</b>
<b>AVP/DOS Networking Meeting</b>	<b>Boardroom</b>	<b>9:00 am - 10:15 am</b>
<b>Session D1</b>	<b>Grand Republic A</b>	<b>9:15 am - 10:15 am</b>
 <b>A Comprehensive Theoretical Approach to Student Leadership Development: A Study of Leadership Behaviors of First-Year to Senior Students</b> Johnny Robinson, Assistant Director of Fraternity and Sorority Life, University of Texas at Arlington Ashley Tull, Director of Student Affairs Assessment, Southern Methodist University		
<p>This program, aimed at leadership educators and those with an interest in leadership development, will address a study conducted of leadership behaviors for freshmen through senior students and students involved in fraternity and sorority programs. Students at a mid-size regional public university participated in a program with a focus on diverse learning styles, delivery methods and contemporary theoretical models to enhance their leadership development. Student results will be presented and participants will have the opportunity to discuss relevant practical implications as a result of study findings.</p>		
<b>Session D2</b>	<b>Grand Republic B</b>	<b>9:15 am - 10:15 am</b>
 <b>Reclaiming the “Scholar” in Scholar-Practitioner</b> Audrey Sorrells, Associate Dean of Students for Research/Associate Professor, The University of Texas at Austin Jessica Faith Carter, Graduate Research Assistant, The University of Texas at Austin Rachel Wulbert, Graduate Research Assistant, The University of Texas at Austin		
<p>Student Affairs professionals often lose touch with the scholarly side of higher education administration. This interactive session will help participants explore the range of Sriram &amp; Oster’s (2012) Scholar – Practitioner Continuum and challenge them to determine where they fall on the continuum. Participants can expect to leave the session with a renewed commitment to incorporating scholarly research into their practice.</p>		
<b>Session D3</b>	<b>Grand Republic C</b>	<b>9:15 am - 10:15 am</b>
 <b>Collaborate and conquer: Fulfilling OCR’s expectations at a small college</b> Eric Hartman, Dean of Students, The University of the South Alexander Bruce, Associate Dean of Students, The University of the South		
<p>Implementing effective campus policies that meet the expectations of the Office of Civil Rights, especially concerning DCL, T-IX, and VAWA, can be a challenge at small colleges with limited staff. In this session, professionals from Sewanee: The University of the South will outline the practical steps we have taken, focusing on collaboration, education, intervention, and enforcement.</p>		
<b>Session D4</b>	<b>Grand Republic D</b>	<b>9:15 am - 10:15 am</b>
 <b>Utilizing Accreditation Activities for Good Instead of Evil</b> Adam Sterritt, Assistant Vice President for Student Affairs, The University of Alabama		
<p>An upcoming date with SACS can cause great trepidation on campus and cause Student Affairs professionals to begin questioning their existence. Where do we start? Do we have the necessary data? Do we need to develop new outcomes? Why are they out to get us? Rather than approaching reaffirmation from a context of fear, this session will provide strategies for utilizing accreditation visits to help refocus on mission and core values, collaboration and efficiency, and intentional planning.</p>		
<b>Break - Visit Exhibits</b>	<b>Grand Republic Lobby</b>	<b>10:15 am - 10:30 am</b>

**Featured Speaker: Maggie Culp****10:30 am - 12:00 pm****Culture of Evidence 2.0**

E-learning and technology are game changers for the student affairs profession. Recent efforts to create a culture of evidence (or a culture of assessment) in student affairs illustrates that the profession understands the importance of demonstrating the effectiveness of processes, programs, and services. But most of these efforts remain in the beginning stages. Student affairs professionals need to move very quickly into creating Cultures of Evidence 2.0 that:

- Are built on a sound theoretical foundation
- Ask and seek answers to questions that matter (not just questions that are easy to answer)
- Moves beyond satisfaction surveys
- Use technology effectively, but are not driven (or limited) by technology
- Understand and respect numbers, but realize that numbers do not always tell the entire story

Building capacity within student affairs team is essential to effectively moving from Culture of Evidence 1.0 to Culture of Evidence 2.0. Two exercises will assist participants to assess their technology knowledge and skills and to determine their readiness to collaborate with information technology and institutional research. A third exercise will invite participants to assess what they have done (or are doing) to support e-learners, one of the fastest growing populations in higher education.

**Grand Republic B****Lunch on your own****12:00 pm - 1:30 pm****Session E1****Grand Republic A****1:30 pm - 2:30 pm****Gamifying the System: Can Gaming Enhance the Transfer Student Experience?**

Jennifer Sumner, Director, Special Programs & Bachelor of Applied Science Program, University of Central Florida

Pam Cavanaugh, Assistant Vice Provost, University of Central Florida

Students transferring from a two-year college to a four-year university face a strange new world. With challenges in admission, enrollment, and transition, students can feel lost when advancing to their next academic level. However, through gamifying the transfer system, students can better navigate this often daunting process, and unlock the potential for their successful, educational quests.

**Session E2****Grand Republic B****1:30 pm - 2:30 pm****College Success for First-Generation Students: Meeting the Challenges**

Susan Bourland, Director-Federal TRIO Programs, University of Southern Mississippi  
Larry Sparkman, Director-Luckyday Scholars Program, University of Southern Mississippi

Higher education is not doing enough to support students who are first in their families to attend college. These students are lost in the university's domain and are often brushed aside until they leave without graduating. This presentation will increase understanding of the needs of first-generation students and discuss how to provide activities and programs they need for success.

**Session E3****Grand Republic C****1:30 pm - 2:30 pm****Marketing to students: How to get organized, get started and maintain your message**

Keri Cyr, Assistant Director, TCU Transitions, Texas Christian University

Student Affairs professionals have many venues for communicating with students but more questions than answers about which ones work and how to use them effectively. Join in on a conversation about one department's process towards a consistent communications plan that you can apply in your situation.

**Session E4****Grand Republic D****1:30 pm - 2:30 pm****Getting to, "It's just what we do": Cultivating Spirit and Tradition on Your Campus**

Tanner Vickers, Assistant Director of Vibrancy and Tradition, Stetson University

Aside from what scant anthropological studies lend us, the field of student affairs knows very little about the cultural effects and developmental impact of spirit and tradition. This presentation will broach a relatively unexplored realm of higher education to provide you with a sound framework that can be used to develop tangible spirit and timeless traditions.

**Break - Visit Exhibits****Grand Republic Lobby****2:30 pm - 2:45 pm**

**Session F1****Grand Republic A****2:45 pm - 3:45 pm****Sink or Swim: How to Navigate the Political Waters at a New Institution**

Lady Cox, Interim Assistant Vice President for Student Affairs, Auburn University

Brandon Frye, Assistant Vice President and Dean of Students, University of West Florida

This presentation will provide participants with an opportunity to learn success strategies for navigating the political waters of a new institution. Participants will learn about balancing between authentic leadership and the masks that new leaders may have to wear when working at their new university. As part of the session, attendees will hear humorous anecdotes, learn best practices, and have the opportunity to ask questions of a panel of student affairs professionals from across the southern region of the United States.

**Session F2****Grand Republic B****2:45 pm - 3:45 pm****The Erosion of Public Trust in Higher Education: The Student Perception**

James Archibald, Assistant Professor of Higher Education, Valdosta State University

Institutions of higher education in the United States have a duty and responsibility to serve the public (Wellman, 2006). There was a time when the public looked to colleges and universities as leaders of development and advancement in our society. Students are beginning to lose trust in higher education. This study investigates the causes of the current erosion of trust.

**Session F3****Grand Republic C****2:45 pm - 3:45 pm****Redeveloping the First-Year Seminar**

Dave Sullivan, Assistant Director of Career &amp; Leadership Programs, University of Florida

Liz D'Souza, Director of Career &amp; Leadership Programs, University of Florida

Josh Funderburke, Executive Director, Center for Leadership and Service, University of Florida

Thousands of campuses provide First Year Experience (FYE) seminars; however, how do you go about updating the course to reflect current trends in FYE needs? This program will review how the supporting literature can provide a foundation for your FYE renovation to create an enhanced and meaningful FYE course for both the student and instructor.

**Session F4****Grand Republic D****2:45 pm - 3:45 pm****Advising Culturally Diverse Students in Higher Education**

Golda Sharpe, Project Coordinator, Luckyday Programs, The University of Mississippi

Senora Miller-Logan, Assistant Director, Luckyday Programs, The University of Mississippi

Jari Minnett, Graduate Assistant, The University of Mississippi

Cultural diversification and sensitivity is of growing importance when advising students. It's important to be aware and knowledgeable of cultural norms and sensitivities individual students have as well as acknowledge our own perceptions that we bring in the advising setting. As the attention to diversity increases, it becomes important for offices with academic advising responsibilities to begin examining their practices.

**WEDNESDAY, JUNE 11****Closing Brunch****Grand Republic B****8:30 am - 10:30 am****Symposium Speaker: Becky Spurlock — What's Next for NASPA Region III**

Whether you read the print media, latest bestsellers or follow along on social media, it is a rare day that goes by without someone discussing the uncertain future of higher education. As the leading voice for the student affairs profession worldwide, NASPA is forging ahead in developing a responsive vision for the association and the field. Dr. Spurlock will share how Region III will contribute and respond to changes in higher education and what members can expect in the coming years.

# NASPA REGION III LEADERSHIP

## REGION III VICE PRESIDENTS

1965–1966 David Robinson, Emory University  
1966–1968 James E. Foy, Auburn University  
1968–1969 Arden French, Louisiana State University  
1969–1970 John Blackburn, University of Alabama  
1970–1971 James E. Foy, Auburn University  
1971–1972 Suthern Sims, Furman University  
1972–1973 John D. Jones, Memphis State University  
1973–1974 Suthern Sims, Furman University  
1974–1976 Allan Rodgers, Mississippi State University  
1976–1978 John J. Koldus, Texas A & M University  
1978–1980 Charles M. “Rocky” Renneisen, University of Tennessee – Chattanooga  
1980–1982 Edward H. Hammond, University of Louisville  
1982–1984 Bob E. Leach, Florida State University  
1984–1986 David McIntire, Appalachian State University  
1986–1988 James E. Caswell, Southern Methodist University  
1988–1990 Thomas E. Myers, Eastern Kentucky University  
1990–1992 Linda Mahan, University of Montevallo  
1992–1994 Patricia Terrell, Southern Methodist University  
1994–1996 Cheryl Callahan, University of North Carolina – Greensboro  
1996–1998 Almeda R. Jacks, Clemson University  
1998–2000 Frank Ardaiole, Winthrop University  
2000–2002 Leonard Goldberg, University of Richmond  
2002–2004 Jan Winniford, Texas A & M University  
2004–2006 Harold Holmes, Wake Forest University  
2006–2008 Gene Zdziarski, University of Florida  
2008–2010 Tom Shandley, Davidson College  
2010–2012 Joy Smith, Clemson University  
Changed title to Region III Director in 2012  
2012–2014 Jeanine Ward-Roof, Florida State University  
2014–2016 Becky Spurlock, The University of the South

## LEADERSHIP TEAM

**Regional Director**  
Becky Spurlock

**Past Regional Director**  
Jeanine Ward-Roof

**Elections/Advisor**  
Deb Heida

**Chief of Staff/Secretary**  
Helen Grace Ryan

**Treasurer**  
Grant Azdell

**Membership Services**  
James Hunt

### *Historian*

Kat Callahan

### *Graduate Student Representative*

Megan Sunga

### *IT Coordinator/Communications*

Hawken Brackett

### *SACSA Liaison to NASPA (SACSA President-Elect)*

Tony Cawthon

### *Volunteer Coordinator*

Erin Fox

## NATIONAL PROGRAMS

### *Public Policy Coordinator*

Penny Rue

### *Professional Standards*

Alicia Caudill

### *Enough is Enough*

Mylon Kirksy

### *NUFP*

Brandy Propst and Susana Hernandez

### *Nominations and Awards*

Jody Conway

Lorie Kittendorf

### *Faculty Division*

Pam Havice

### *Community College Division*

Ivan Harrell

### *Small Colleges and Universities Division*

Eric Hartman

## CONFERENCE/REGIONAL PROGRAMS

### *Corporate Sponsor Liaison*

Rosie Bingham

### *NASPA/SACSA Mid Managers Director*

James Adam-Dunford

### *NASPA/SACSA NPI Director*

Melissa Shivers

### *NASPA/SACSA Conference Liaison*

Denny Bubrig

### *Professional Programs*

Danny Armitage

### *Summer Symposium 2015 Chair*

Peggy Crowe

### *NASPA to SACSA Liaison*

Lori White



## STATE/COUNTRY DIRECTORS

### *Alabama*

Denny Bubrig

### *Florida*

Eric Arneson

### *Georgia*

Marc Shook

### *Kentucky*

Rhonda Strouse

### *Louisiana*

Bill Mattera

### *Mississippi*

Ryan Upshaw

### *North Carolina*

Art Jackson

### *South Carolina*

Jason Cassidy

### *Tennessee*

Pat Helland

### *Texas*

CJ Woods

### *Virginia*

Steve Bisese and Tina Cade

### *Mexico*

Jorge Lozano

### *UAE*

Courtney Stryker

## KNOWLEDGE COMMUNITY REPRESENTATIVES

### *Knowledge Community Coordinator*

Cara Appel-Silbaugh

### *Administrators in Graduate and Professional Student Services*

Lanell Smith

### *Adult Learners and Students with Children*

Roland Bullard

### *African-American Concerns*

Mel Norwood

### *Alcohol and Other Drug*

Matt Varga

### *Asian Pacific Islanders Concerns*

Stephanie Zee

### *Assessment, Evaluation and Research*

Dametras Jagers

### *Campus Safety*

Christina Wan

### *Disability Concerns*

Danette Saylor

### *Fraternity and Sorority Affairs*

Francisco Lugo

### *Gay, Lesbian, Bi-Sexual and Transgender Issues*

Jeremy Foskitt

### *Indigenous People*

Vacant

### *International Education*

David Clark

### *Latino/a*

Ladanya Ramirez Surmeier

### *Men and Masculinities*

Steve Moran

### *MultiRacial*

Nicole Ralston

### *Graduate Students and New Professionals*

Tava Bingham

### *Parent and Family Relations*

Ashley Lemmons

### *Socioeconomic and Class Issues*

Lee Ward & Kristin Sowden

### *Spirituality and Religion in Higher Education*

Ben Lion

### *Student Affairs Development and External Relations*

Edna Dominguez

### *Student Affairs Partnering with Academic Affairs*

Bill Woodward

### *Student Athlete Concerns*

Brent Marsh

### *Student Leadership Programs*

Ahmed Samaha

### *Sustainability*

Charley Pride

### *Technology*

Brian Bourke

### *Veterans*

Natesha Smith

### *Wellness and Health Promotion*

Evan Sauperstein

### *Women in Student Affairs*

Lori Vaughn

# NASPA REGION III AWARDS

Each year NASPA recognizes outstanding members by honoring individual professionals with regional awards. This year, we are honoring nine professionals who have demonstrated their commitment to students and their learning, serving as models in our profession.

## **The President's Award**

***Ronald Vaughn, President, The University of Tampa***

This award is a special recognition given to a college or university president who has, over a sustained period of time, advanced the quality of student life on campus by supporting student affairs staff and programs. The winner must show evidence of direct involvement in enhancing the quality of student life on campus, active attempts to involve students and student life staff in governing the institution, and demonstrable contributions to the profession which have an impact beyond an individual campus.

## **John Jones Award for Outstanding Performance as a Senior Student Affairs Officer**

***Ellen Neufeldt, Vice President for Student Engagement and Enrollment Services, Old Dominion University***

This award recognizes sustained professional service as a Senior Student Affairs Officer, including high-level competency in administrative skills and effectiveness in the development of junior staff members. The winner is recognized for innovative response in meeting varied and emerging needs of students. In particular, the John Jones winner merited respect and support of students, faculty and fellow administrators on his/her own campus. Lastly, the winner has made significant contributions to the field through publications or professional involvement as well as leadership in community and university affairs.

John Jones was the first vice president of student affairs of the University of Alabama at Birmingham (UAB). He served in this role from 1978-1990. He was responsible for the development, design, and funding of the Hill University Center, UAB's first student center complex, and was actively involved in the planning, construction, and operation of the Bartow Arena. He was awarded NASPA's Scott Goodnight Award for Outstanding Performance as a Dean which honors those who have demonstrated sustained, high-quality work and professional service in student affairs. He authored or co-authored numerous papers and articles published in professional journals. He also received a number of special honors and awards from SACSA (Southern Association for College Student Affairs) including the Melvene Draheim Hardee Award and the Howard H. Davis, Sr. Award.

The recipient of this award will be the Region III nominee for the Scott Goodnight Award given by NASPA at its annual Spring Conference.

## **John Koldus Award for Distinguished Service to NASPA Region III**

***Daniel Armitage, Assistant Vice President for Student Affairs and Dean of Students, University of Memphis***

This award is given to recognize The individual nominated must have demonstrated leadership performance in NASPA at the state, regional, or national level, the high quality of which is recognized by NASPA peers. These contributions are above and beyond the normal service required by positions of leadership. Winners have all held continuous NASPA membership for at least ten years.

John Koldus served NASPA as Region III Vice President in 1976-78 and as Conference Chair for the 1984 NASPA Conference in Louisville. He received some of NASPA's highest honors including the Fred Turner Award for Outstanding Service to NASPA and the Scott Goodnight Award for Outstanding Performance as a Dean and was named a

NASPA Foundation "Pillar of the Profession" in 2001. During his career, he served on the executive committees of numerous organizations including SACSA (Southern Association for College Student Affairs), TACUSPA (Texas Association of College and University Student Personnel Administrators), and NASULGC (National Association of State Universities and Land Grant Colleges.)

The recipient of this award will be the Region III nominee for the Fred Turner Award for Outstanding Service to NASPA given at the national conference.

## **The Bob E. Leach Award for Outstanding Service to Students**

***Jennifer Jones, Executive Director of Student Development and Programs, Southern Methodist University***

This award is given to recognize genuine and sincere sense of caring and concern for students as well as a commitment to personalized student experiences and evidence of successful efforts in humanizing the campus community. The winner demonstrates high quality interaction with individual students and student groups, evidences successful student advocacy and performs "above and beyond the call of duty" while serving multiple roles within the campus community.

Dr. Bob E. Leach's first professional position was at Wofford College in Spartanburg, SC where he served as associate dean of students. Prior to this he was a mathematics teacher and vice principal at a high school in Spartanburg. He went on to serve as dean of students for 5 years at Southern Methodist University. In 1978 he was appointed as vice president for student affairs at Florida State University, making him the highest-ranking black administrator in FSU history. He held this position until 1988. He served as president of NASPA from 1985-1986, on the executive committee of SACSCA (Southern Association for College Student Affairs), and as chair of the State University System Council for Student Affairs. Helping students, faculty and staff create a caring and sharing community, one in which students could develop their own sense of ethics and values, was Leach's mission at Florida State. He believed that the academic, social and personal experiences of students strongly shaped their success and growth.

## **The William Leftwich Award for Outstanding New Professional in NASPA Region III**

***Brandy Propst, Coordinator of Academic Foundations and Mentoring, Undergraduate Studies, The University of North Carolina at Greensboro***

This award recognizes new professionals that have served more than three years in a full-time position in student affairs. The winner has performed all aspect of his/her job in an exemplary manner and has made contributions to NASPA and their individual institution.

This award was named to honor William "Bill" Leftwich and his remarkable career in higher education. An Army veteran, Dr. Leftwich received two degrees from the University of Richmond—a B.A. in 1952 and an M.A. in 1956—and earned a Doctor of Philosophy in psychology in 1962 from Purdue University. He returned to his alma mater as an assistant professor in the department of psychology and rose through the faculty ranks to become department chair and director of the Center of Psychological Services in 1966. Having established himself as a knowledgeable and valuable resource to the university, in

1972 he was named director of student services and activities. Then in 1973 he became the University of Richmond's first vice president for student affairs, a position he held until his death in 1986. Bill Leftwich is remembered as a man with a great sense of humor, an avid tennis player, and a wonderful colleague with a deep love for higher education. As vice president he provided leadership for a disparate set of offices and services to become a viable division of student affairs. Devoting his life and career to the University of Richmond, he was influential in the lives of many students and his example was an inspiration to other professionals seeking to make higher education their life's work.

The recipient of the Region III award will be recognized at the annual conference Awards Ceremony.

**The Robert D. Bradshaw Small Colleges Student Advocate Award**  
*Kijua Sanders-McMurtry, Associate Dean of Students, Special Assistant to the President on Diversity, Agnes Scott College*

This award recognizes student affairs professionals serving the unique needs of students in an institution of higher education of less than 2500 students. The winner has demonstrated commitment to the mission and goals of small colleges and evidence of significant successful student advocacy and interaction with individual students and student groups. In addition, he/she has performed 'above and beyond the call of duty' while serving multiple roles within the campus community.

Dr. Robert Bradshaw or "Brad" as many in the profession knew him, served as the vice president of student affairs at Austin College in Sherman, Texas, where he developed and refined the division. He received his undergraduate degree from Southern Methodist University, his Masters from Miami University of Ohio, and his Doctorate from the University of Missouri. While there he did his dissertation on retention at small colleges and used Austin College for the basis of his work. Within NASPA he was one of the early voices and advocates for small colleges. He believed strongly that we needed to focus more on the large number of small colleges across the nation and offer more intentional professional development for small college staff. Many professionals who created the Small College Institute, the Small Colleges and Universities Knowledge Community, and such initiatives did so knowing these were Brad's passions and dreams. This award honors the significant roles Brad played in a small college setting and beyond. He was a special person who championed students and who challenged those around him to always do the right thing.

**James E. Scott Outstanding Mid-Level Student Affairs Professional Award**

*Helen-Grace Ryan, Dean of Students, Bellarmine University*

This award recognizes the contributions of practitioners with as least five years of full-time experience in the field of student affairs who have demonstrated expertise in creating a campus environment that promotes student learning and personal development. In addition, the winner has made outstanding individual contribution in innovative and responsive services and programs that address varied and emerging needs of students, as well as significant contributions to the profession and to NASPA.

Dr. Jim Scott began his professional career at Eastern Michigan University, serving as assistant dean of students, and later as associate dean of students and director of the office of campus life. In 1981 he moved to the University of Florida where he served as dean of students, a position he would hold for 12 years, and quickly gained a reputation as someone students could trust. He earned high praise in 1990 for his help in guiding the university through one of its toughest periods-the murders of five local college students, four of whom were enrolled at UF. In 1993 he left UF to become vice president for student services at Georgia State University, but returned to UF six years later as vice president of student affairs. Jim was a very active and engaged member of NASPA, serving as

conference chair in 1992 and NASPA President in 1994-95. In 2001 he was named one of the NASPA Foundation Pillars of the Profession. He also served on the ACPA-NASPA Blue Ribbon Committee just before his untimely death in 2003. As NASPA president, Jim established the National Academy for Leadership and Executive Effectiveness providing high quality professional development opportunities for SSAOs. Dean Scott was widely known for his down-to-earth personality and ability to work easily with professional colleagues and students alike. He has a strong commitment to staff development and professional growth. This award is presented to mid-level student affairs professionals that demonstrate the personal and professional qualities that characterized Dr. James E. Scott.

The recipient of the Region III James E. Scott Outstanding Mid-Level Professional Award will be submitted as the region's candidate for the national Mid-Level Student Affairs Professional Award.

**Outstanding Contribution to Student Affairs through Teaching**  
*James Archibald, Assistant Professor and Program Coordinator, Higher Education and Student Affairs, Valdosta State University*

This award recognizes contributions to the profession through development of professionals as well as through research and publication. The winner has also contributed to the profession through active involvement with professional organizations.

The recipient of the award will be the Region III nominee for the Robert Shaffer Award for Academic Excellence as a Graduate Faculty member.

**Outstanding Graduate Student in Region III Award**  
*Megan Sunga, Graduate Residence Coordinator, University of Central Florida*

This award recognizes achievement, involvement and potential for leadership in our emerging Student Affairs professionals. Nominees for this award must be students pursuing a masters degree related to student affairs with the intent of pursuing a career in the field. Nominees may not be current full-time employees of an institution. Preference will be given to students who also have a graduate assistantship or internship experience in a student affairs department. The winner has made significant contribution to their campus, demonstrated academic achievement. In addition, he/she has exceeded the expectations of their respective leadership positions, assumed a leadership role at their institution and/or at the state or regional levels. They are noted for their potential for substantial contributions to the student affairs profession.

The recipient of this award will also receive a one-year membership to NASPA.

**Community College Professional Award**

*Dan Rodkin, Associate Vice President, Student Affairs, Santa Fe College*

This award is presented to an individual who has demonstrated leadership and a commitment to NASPA and/or the profession. Student Affairs professionals in all positions are eligible for this award. Nominees must have demonstrated active involvement with the profession, NASPA, and Community College research, policies, or practice; at the regional level. Nominees must have contributed to creating a campus environment that promotes student learning and personal development. In addition, he/she must have made an outstanding individual contribution in innovative and responsive services and programs that address varied and emerging needs of students. The individual must have a minimum of five years' experience in student affairs and be either a current NASPA member within the region or have retired from the region.

# NASPA REGION III AWARD WINNERS

## President's Award

2010 Donna Shalala  
2011 James Wagner  
2012 Eric J. Barron  
2013 Renu Khator  
2014 Ronald Vaughn

## John Jones Award for Outstanding Performance as a Senior Student Affairs Officer

1984 John Jones  
1985 Annette Gibbs  
1986 Ed Hammond  
1987 C. Van Wyatt  
1988 Linda Mahan  
1989 Art Sandeen  
1990 Dale Adams  
1991 Robert Barlow  
1992 Dennis Pruitt  
1993 C. Rocky Renneisen  
1994 Robert LaLance Jr.  
1995 Frances Lucas-Taucher  
1996 Fred Rhodes  
1997 B. Jeanne Fisher  
1998 Robert T. Canevari  
1999 Wanda Mercer  
2000 Sharon H. Justice  
2001 Thomas Miller  
2002 Don Carson  
2003 Sam Sadler  
2004 William A Seymour  
2005 Bonita C. Jacobs  
2006 William W. Sandler Jr.  
2007 Charles F. Lynch  
2008 Harry B. Shucker  
2010 Dennis Pruitt  
2011 Gage E. Paine  
2012 Patricia Whitely  
2013 Patricia Leonard  
2014 Ellen Neufeldt

## John Koldus Award for Distinguished Service to NASPA

1984 John Koldus  
1985 Rocky Renneisen  
1986 Bill Mendenhall  
1987 Dave McIntire  
1988 Bob Leach  
1989 Jim Caswell  
1990 Tom Goodale  
1991 Tom Myers  
1992 Peter Durkee  
1993 George Young  
1994 Linda Mahan  
1995 Cheryl Callahan  
1996 Bridgett Pregliasco

1997 James Scott  
1998 Almeda Rogers Jacks  
1999 Frank Julian  
2000 Kurt Keppler  
2002 Joy Smith  
2003 Harold R. Holmes  
2004 Steve S. Neilson  
2005 Janet C. Winniford  
2006 Frank P. Ardaiolo  
2007 Mark G. Shanley  
2008 Eugene L. Zdziarski  
2010 Tom Shandley  
2011 Jeanine A. Ward-Roof  
2012 James F. Conneely  
2013 Roberta Bigger  
2014 Daniel Armitage

## Bob Leach Award for Outstanding Service to Students

1990 Wanda Lewis-Campbell  
1991 Dennis Pruitt  
1993 Cristina Gabriel  
1994 K.C. Potter  
1995 Michael Cuyjet  
1996 Patricia Terrell  
1997 Aaron Lamar  
1998 Cranford C. Johnson  
1999 Richard Mullendore  
2000 William M. McDonald  
2001 Haven Hart  
2002 Brit Katz  
2003 Deborah L. Shaw  
2004 Daniel P. Nadler  
2005 Kent L. Gardner  
2006 Elizabeth D. Wallace  
2007 Juliette L. Landphair  
2008 Erica C. Woodley  
2010 Eric Hartman  
2011 Melissa Shehane  
2012 Paul Goebel  
2013 Jesse Downs  
2014 Jennifer Jones

## William Leftwich Award Outstanding New Professional

1983 Vernon Wall  
1986 Maribeth Cowan  
1987 Jay Lemons  
1988 Bridgett Pregliasco  
1989 Jim Doran  
1990 Ken Osfield  
1991 Pattie Tomanio  
1992 Kenna Brandenburg  
1993 Beth Conn Goldstein  
1994 Tracy Moore  
1995 Brent Damrow



1996 Rod Lipscomb  
1997 Cynthia Strine  
1998 Myles E. Bowman  
1999 Dan Karns  
2000 Laura S. Yeargni  
2001 Jennifer Ford  
2002 Jason Dean  
2003 Jerrid P. Freeman  
2004 Kerry E. Frankhauser  
2005 George A. Arey  
2006 Olga Rybalkina  
2007 Amanda N. Wallace  
2008 Adriana Alicea-Rodriguez  
2009 Steven “Ray” Ellington  
2010 Kathleen Callahan  
2011 April Moore  
2012 Christine Hernandez  
2013 Cord McLean  
2014 Brandy Propst

**Robert Bradshaw Award – Small Colleges Student Advocate Award**

1994 Janet Heeter  
1995 Tom Carver  
1996 Charlotte Elam Tullos  
1997 Cathy E. Brown  
1998 William Seymour  
1999 Tom Shandley  
2003 Peter E. Nevil  
2004 Tim P. Millerick  
2005 Douglas R. Little  
2006 Stephanie Perler Garst  
2007 Gue P. Hudson  
2009 Dudley Long  
2010 Jaime Woody  
2011 David Tuttle  
2012 Mary Beth Bankson Williams  
2013 Rosalie Carpenter  
2014 Kijua Sanders-McMurtry

**James E. Scott Outstanding Mid-Level Student Affairs Professional Award**

2002 Deb Casey Powell  
2003 Kenneth Osfield  
2004 Monica M. Mudzik  
2005 Craig E. Ullom  
2006 Kenneth Posner  
2007 Jennifer L. Ford  
2008 Danielle Busson McDonald  
2009 Lisa Nagy  
2010 Vince Diller  
2011 Michael Farley  
2012 Juan R. Guardia  
2013 Todd Clark  
2014 Helen-Grace Ryan

**Outstanding Contribution to Student Affairs Through Teaching**

2001 John Baier  
2002 Joan B. Hirt  
2003 Diane L. Cooper  
2005 Tony W. Cawthon  
2006 Steve M. Janosik  
2007 Merrily S. Dunn  
2010 Kathy Guthrie  
2011 Stan Carpenter  
2012 Deborah Taub  
2013 Thomas Miller  
2014 James Archibald

**Outstanding Graduate Student in Region III Award**

2011 Teresia Greer  
2012 Veronica Rendon  
2013 Joshua Moll  
2014 Megan Sunga

**Outstanding Community College Professional**

2013 Magdalena de la Teja  
2014 Dan Rodkin



**#NASPAgives is an annual campaign for the NASPA Foundation, designed to increase awareness about the NASPA Foundation among NASPA members of all levels, while also raising funds to support scholarships and research for the profession.**

**When you give to the NASPA Foundation, you:**

**INVEST** in innovative research

**GIVE** back to the profession you love

**REWARD** young student affairs professionals with scholarships

**CELEBRATE** the work of outstanding colleagues

**VALIDATE** student affairs as a significant force on campus

**CONTRIBUTE** to best practices in our field

**Your contribution – no matter the size – exemplifies your commitment to the future of our profession.**



R3-SS14

30% off all products

Valid 5/20 through 7/31/14

Excludes shipping and handling, subscription products, and gift certificates

<http://www.naspa.org/publications/books>

### DOWNTOWN DISNEY®

#### **Bodie's All-American**

\$, American  
(407) 938-9023

#### **Bongos Cuban Café™**

\$\$, Cuban  
(407) 828-0999

#### **Cookes of Dublin**

\$, American, Irish  
(407) 938-0300

#### **Crossroads at House of Blues®**

\$\$, American  
(407) 934-2583

#### **Earl of Sandwich®**

\$, American  
(407) 938-1762

#### **The Express at Wolfgang Puck® Grand Café**

\$, American, Sushi  
(407) 938-9653

#### **FoodQuest**

\$, American  
(407) 828-3800

#### **Fulton's Crab House**

\$\$-\$\$\$\$, American, Seafood  
(407) 934-2628

#### **Pollo Campero**

\$, American, Latin  
(407) 938-9022

#### **Planet Hollywood®**

\$\$, American  
(407) 827-7827

#### **Paradiso 37, Taste of the Americas**

\$\$, Multiple Cuisines  
(407) 934-3700

#### **Portobello Country Italian Trattoria**

\$\$\$ , Italian, Seafood

#### **Raglan Road™ Irish Pub and Restaurant**

\$\$-\$\$, Irish  
(407) 938-0300

#### **Signature/Fine Dining**

California Grill  
\$\$\$ , American, Seafood, Sushi Cuisine  
Magic Kingdom Resort Area  
(407) 939-3463

#### **T-REX™**

\$\$, American  
(407) 828-8739

#### **Rainforest Café®**

\$\$, American  
(407) 827-8500

#### **Wolfgang Puck® Express at Downtown Disney**

\$, American  
(407) 828-0107

#### **Wolfgang Puck® Grand Café**

\$\$\$ , Multiple Cuisines  
(407) 938-9653

#### **The Dining Room at Wolfgang Puck® Grand Café**

\$\$\$ , Multiple Cuisines  
(407) 938-9653

### THE CONTEMPORARY RESORT AREA

#### **California Grill**

\$\$\$ , American, Seafood, Sushi Cuisine  
(407) 939-3463

#### **Chef Mickey's**

\$\$\$ , Buffet/Family Style, Character Dining  
Magic Kingdom Resort Area  
(407) 939-3463

#### **The Wave...of American Flavors**

\$\$, Buffet/Family Style  
American Cuisine  
(407) 939-3463

#### **Contempo Café**

\$, Breakfast  
(407) 939-3463

#### **The Sand Bar**

\$, American  
(407) 939-3463

### POLYNESIAN RESORT

#### **'Ohana's Best Friends Breakfast**

\$\$, American, Polynesian

#### **Disney's Spirit of Aloha Dinner Show**

\$\$\$\$ , Polynesian Cuisine

#### **Kona Café**

\$\$, American, Seafood

## SYMPOSIUM PLANNING COMMITTEE

### *Co-Chairs*

Peggy Crowe, Western Kentucky University  
Vicki Dobiayanski, Florida State University

### *Corporate Sponsors*

Rosie Bingham, University of Memphis

### *Local Arrangements Co-Chairs*

Allison Peters, Florida State University  
Carolyn Harris, Florida State University

### **Committee Members**

Shawn Smee, Murray State University  
Patrice Abner, Nova Southeastern University

### *Major Speakers Chair*

Helen Grace Ryan, Bellarmine University

### **Committee Members**

Marc Ebelhar, Georgia State University  
Vince Miller, Georgia Southern University

### *Programs Chair*

Kristen Kawczynski, Florida International University

### *Publications Chair*

Jennifer Young, Murray State University

### *Registration Chair*

Brandon Bowden, Florida State University

### **Committee Member**

Greg Singleton, Austin Peay State University

### *Social Media and Technology Chair*

James Hunt, Florida State University

### *Special Thanks*

Daniel Anzueto, NASPA Regional Programs Coordinator  
Danny Armitage, University of Memphis  
Tony Nguyen, Florida State University  
Becky Spurlock, Region III Director  
Nathan Victoria, NASPA, Director of Member Engagement and Student Initiatives



Join us for next year's

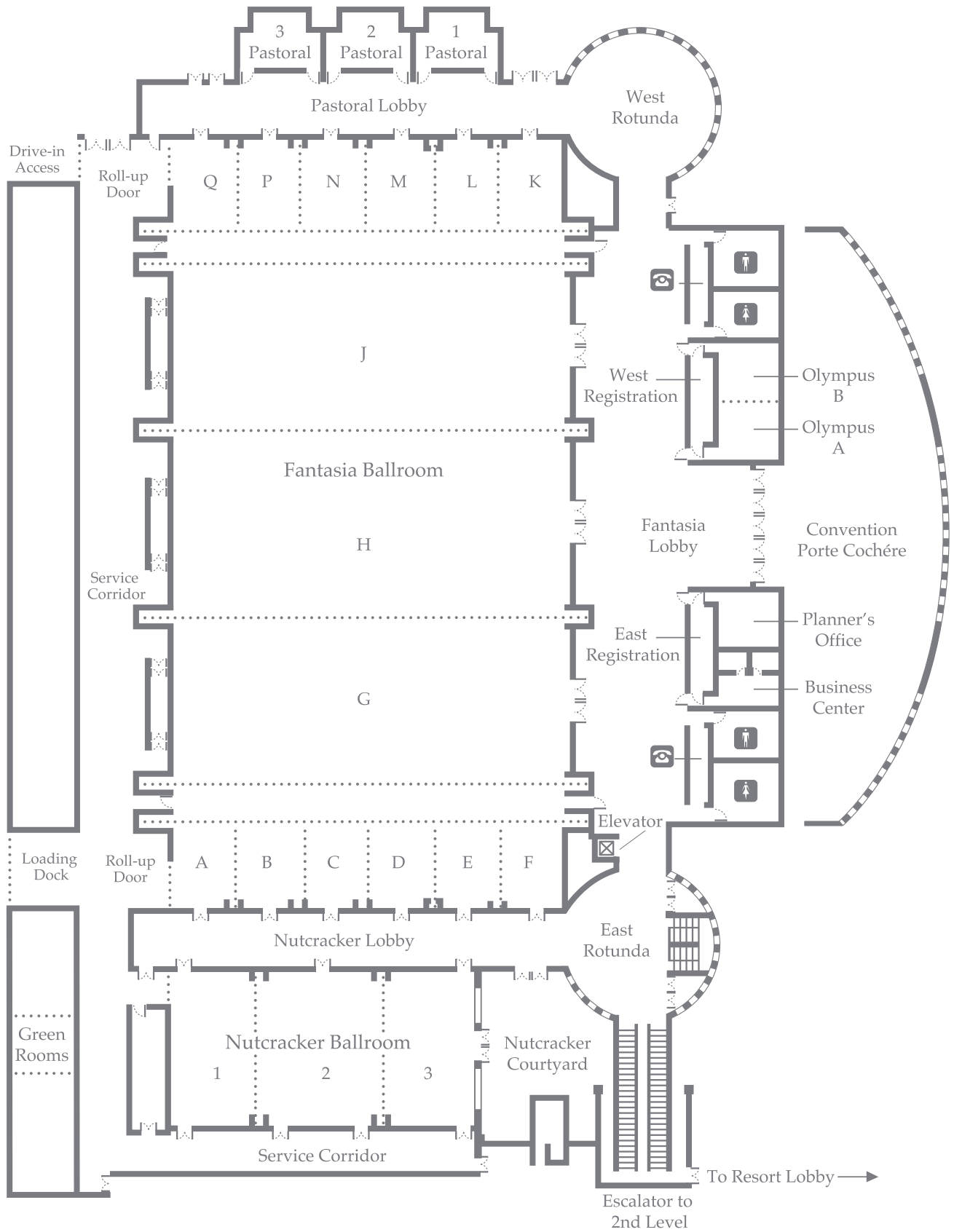
# **NASPA Region III Summer Symposium**

at the *King and Prince Beach and Golf Resort™*  
in St. Simons Island, Georgia

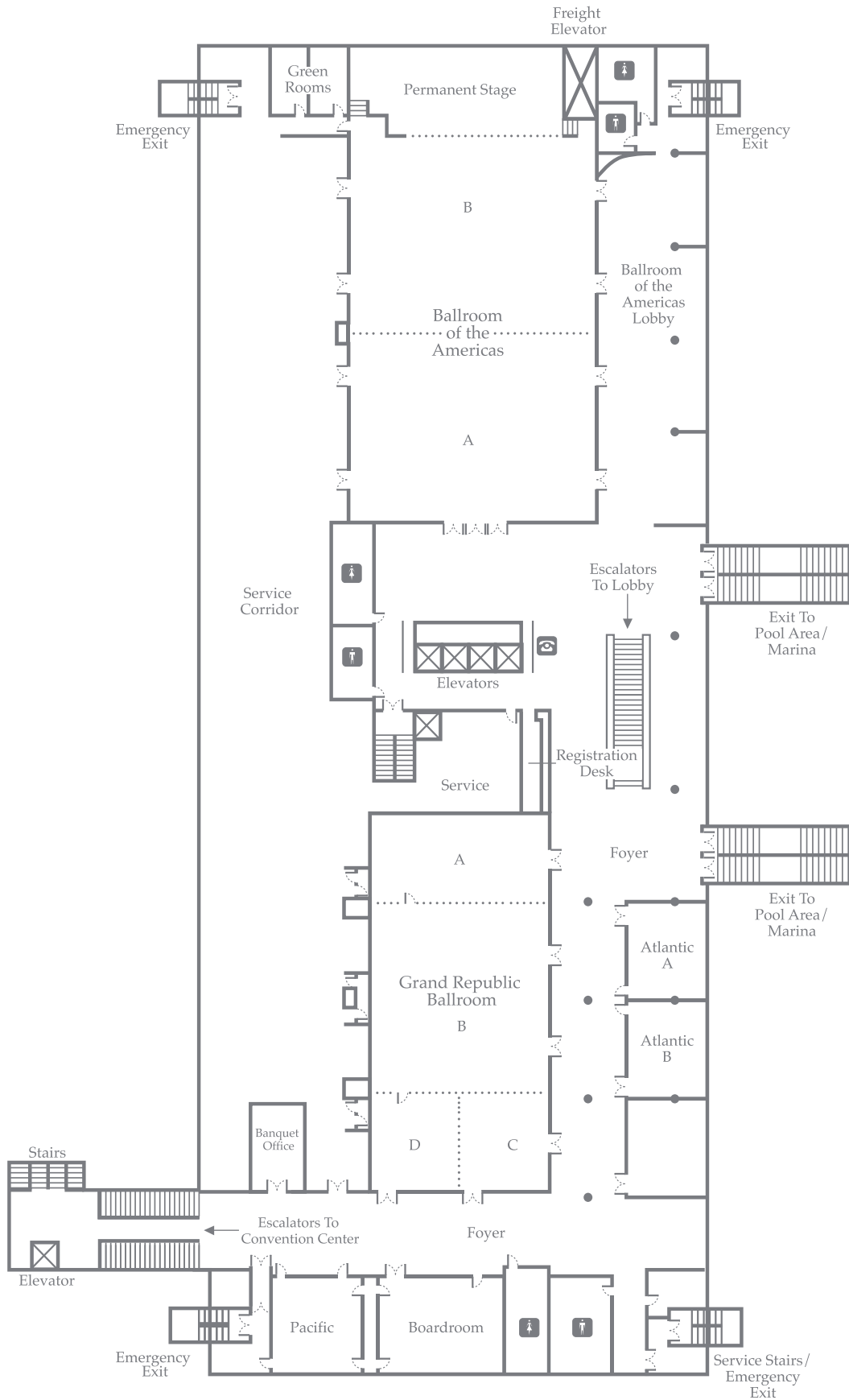
June 20th-24th, 2015



# MAIN LEVEL MEETING AND CONVENTION FACILITIES



# SECOND LEVEL MEETING AND CONVENTION FACILITIES







**NASPA**  
REGION III